



Date: August 10, 2023
To: Weber County Board of County Commissioners
From: Sean Wilkinson, MPA, AICP *SW*
Director, Community Development Department
Subject: **Request for approval of a contract with Cal Wadsworth Construction for a new construction and demolition materials loading area at the Weber County Transfer Station**
Agenda Date: August 15, 2022
Documents: Exhibit A: Construction contract
Exhibit B: Site plan and construction drawings

Summary:

The Weber County Transfer Station is requesting approval of a contract with Cal Wadsworth Construction for a new construction and demolition (C&D) materials loading area. Cal Wadsworth Construction is on State Contract (#MA3916).

The contract includes construction of a new concrete structure with a loading ramp and push wall. The structure will be located on the south side of the Transfer Station (see attached site plan), replacing the existing C&D area west of the administrative office. This contract is for phase 1 of the project with a cost of \$655,769.35. Future phases, including a new scale house and other improvements, will be completed in future years as funding allows.

Exhibit A



Work Order Signature Document

State of Utah eziQC Contract Number: MA3916

New Work Order Modify an Existing Work Order

Work Order Number: 113063.00 Work Order Date: 05/02/2023
Work Order Title: Weber County - Solid Waste Transfer Facility - Phase 1
Owner Name: Weber County Contractor Name: Cal Wadsworth Construction
Contact: Robert Slade Contact: Grace Green
Phone: 801-399-8806 Phone: 801-997-9935
Email:

Work to be Performed

Work to be performed as per the Final Detailed Scope of Work Attached and as per the terms and conditions of NJPA EZIQC Contract No MA3916.

Brief Work Order Description:

Transfer dock construction

Time of Performance *See Schedule Section of the Detailed Scope of Work*

Liquidated Damages Will apply: Will not apply:

Work Order Firm Fixed Price: \$655,769.35

Owner Purchase Order Number:

Approvals

_____ 05/10/2023 _____ 05/10/2023
Date Contractor Date



Detailed Scope of Work

Print Date: May 02, 2023
Work Order Number: 113063.00
Work Order Title: Weber County - Solid Waste Transfer Facility - Phase 1
Contractor: MA3916 - Cal Wadsworth Construction
Brief Scope: Transfer dock construction

To: Grace Green
Cal Wadsworth Construction
406 W South Jordan Parkway
South Jordan, 84095
801-997-9935
From: Robert Slade
Weber County
No Data Input
No Data Input,
801-399-8806

Preliminary

Final

The following items detail the scope of work as discussed at the site. All requirements necessary to accomplish the items set forth below shall be considered part of this scope of work.

Detailed Scope:

The pricing will be held for 30 days upon receiving the quote. The estimate is based off of the plans received by Realize Structural Engineering as of 3-3-23. Our scope of work is held to the transfer pad, concrete slab, and the needed excavation for the construction of the pad- all labor and materials.

Owner Date

Contractor Date



Contractor's Price Proposal Summary - CSI

Print Date: May 02, 2023
Work Order Number: 113063.00
Work Order Title: Weber County - Solid Waste Transfer Facility - Phase 1
Contractor: MA3916 - Cal Wadsworth Construction
Proposal Value: \$655,769.35
Proposal Name: Weber County - Solid Waste Transfer Facility - Phase 1

01 - General Requirements	\$25,712.15
03 - Concrete	\$468,117.05
05 - Metals	\$20,291.70
31 - Earthwork	\$141,648.45
Proposal Total	\$655,769.35

This total represents the correct total for the proposal. Any discrepancy between line totals, sub-totals and the proposal total is due to rounding.



Contractor's Price Proposal Detail - CSI

Print Date: May 02, 2023
Work Order Number: 113063.00
Work Order Title: Weber County - Solid Waste Transfer Facility - Phase 1
Contractor: MA3916 - Cal Wadsworth Construction
Proposal Name: Weber County - Solid Waste Transfer Facility - Phase 1
Proposal Value: \$655,769.35

Sect.	Item	Modifier.	UOM	Description	Line Total
Labor	Equip.	Material	(Excluded if marked with an X)		
01 - General Requirements					
1	01 22 20 00 0008		HR	Cement MasonFor tasks not included in the Construction Task Catalog® and as directed by owner only.	\$25,056.96
			Installation	Quantity Unit Price Factor Total 400.00 x 48.56 x 1.2900 = 25,056.96	
2	01 22 20 00 0045		HR	Surveyor (Instrument person)	\$655.19
			Installation	Quantity Unit Price Factor Total 15.00 x 33.86 x 1.2900 = 655.19	
Subtotal for 01 - General Requirements					\$25,712.15
03 - Concrete					
3	03 11 13 00 0003		SF	Continuous Footings Foundation Wood Formwork	\$10,313.55
			Installation	Quantity Unit Price Factor Total 1,500.00 x 5.33 x 1.2900 = 10,313.55	
4	03 11 13 00 0003 0001		MOD	For <1,000, Add	\$1,702.80
			Installation	Quantity Unit Price Factor Total 1,500.00 x 0.88 x 1.2900 = 1,702.80	
5	03 11 13 00 0011		SF	>12" High Slab Edge and Block-Out Wood Formwork	\$11,207.52
			Installation	Quantity Unit Price Factor Total 1,200.00 x 7.24 x 1.2900 = 11,207.52	
6	03 11 13 00 0011 0005		MOD	For <1,000, Add	\$1,888.56
			Installation	Quantity Unit Price Factor Total 1,200.00 x 1.22 x 1.2900 = 1,888.56	
7	03 11 13 00 0059		SF	>8' High Above Grade Wall Metal Framed Formwork	\$36,625.68
			Installation	Quantity Unit Price Factor Total 5,200.00 x 5.46 x 1.2900 = 36,625.68	
8	03 11 13 00 0059 0016		MOD	For <1,000, Add	\$5,903.04
			Installation	Quantity Unit Price Factor Total 5,200.00 x 0.88 x 1.2900 = 5,903.04	
9	03 21 16 00 0067		LF	#4, Grade 60, Footings, Epoxy Coated Steel Reinforcement Bar	\$7,236.90
			Installation	Quantity Unit Price Factor Total 5,500.00 x 1.02 x 1.2900 = 7,236.90	
10	03 21 16 00 0088		LF	#5, Grade 40, Slab On Grade, Epoxy Coated Steel Reinforcement Bar	\$68,731.20
			Installation	Quantity Unit Price Factor Total 37,000.00 x 1.44 x 1.2900 = 68,731.20	

Contractor's Price Proposal - Detail Continues..

Work Order Number: 113063.00
Work Order Title: Weber County - Solid Waste Transfer Facility - Phase 1

Proposal Name: Weber County - Solid Waste Transfer Facility - Phase 1
Proposal Value: \$655,769.35

Sect.	Item	Modifier.	UOM	Description					Line Total
Labor	Equip.	Material	(Excluded if marked with an X)						
03 - Concrete									
11	03 31 13 00 0007		SF	8" 3,000 PSI Slab On Grade Concrete Slabs Assembly					\$51,145.92
				Installation	Quantity	Unit Price	Factor	Total	
					4,200.00	9.44	1.2900	51,145.92	
					x	x	=		
12	03 31 13 00 0007 0151		MOD	For 4,000 PSI Concrete, Add					\$2,438.10
				Installation	Quantity	Unit Price	Factor	Total	
					4,200.00	0.45	1.2900	2,438.10	
					x	x	=		
13	03 31 13 00 0033		CY	Up To 6", By Crane And Bucket, Place 3,000 PSI Concrete Slab On Grade					\$104,559.66
				Installation	Quantity	Unit Price	Factor	Total	
					360.00	225.15	1.2900	104,559.66	
					x	x	=		
14	03 31 13 00 0070		CY	Up To 8" Thick, By Concrete Pump, Place 3,000 PSI Concrete WallsExcludes pumping equipment.					\$121,724.40
				Installation	Quantity	Unit Price	Factor	Total	
					400.00	235.90	1.2900	121,724.40	
					x	x	=		
15	03 31 13 00 0070 0028		MOD	For 4,000 PSI Concrete, Add					\$2,509.31
				Installation	Quantity	Unit Price	Factor	Total	
					120.00	16.21	1.2900	2,509.31	
					x	x	=		
16	03 37 16 00 0002		HR	55' To 60' Boom Truck For Concrete Placement (95 CY Per Hour Rating)					\$7,584.21
				Installation	Quantity	Unit Price	Factor	Total	
					47.00	125.09	1.2900	7,584.21	
					x	x	=		
17	03 53 19 00 0004		SF	3/4" Thick Hard Trowel Integral Concrete Topping, 1:1:2 Mix					\$34,546.20
				Installation	Quantity	Unit Price	Factor	Total	
					13,000.00	2.06	1.2900	34,546.20	
					x	x	=		
Subtotal for 03 - Concrete									\$468,117.05
05 - Metals									
18	05 12 23 00 0777		SF	1/2" Thick Flat Steel Plate					\$20,291.70
				Installation	Quantity	Unit Price	Factor	Total	
					500.00	31.46	1.2900	20,291.70	
					x	x	=		
Subtotal for 05 - Metals									\$20,291.70
31 - Earthwork									
19	31 11 00 00 0015		CY	Machine Loading Of Cleared And Grubbed Material					\$45,150.00
				Installation	Quantity	Unit Price	Factor	Total	
					5,000.00	7.00	1.2900	45,150.00	
					x	x	=		
20	31 23 16 33 0004		CY	Bulk Excavation by Dozer in Loose RockIncludes compacted aggregate					\$46,891.50
				Installation	Quantity	Unit Price	Factor	Total	
					5,000.00	7.27	1.2900	46,891.50	
					x	x	=		
21	31 23 16 33 0014		CY	Relocating On Site Excavated Material From Bulk Excavation >1,000'					\$43,930.95
				Installation	Quantity	Unit Price	Factor	Total	
					3,500.00	9.73	1.2900	43,930.95	
					x	x	=		

Contractor's Price Proposal - Detail Continues..

Work Order Number: 113063.00
Work Order Title: Weber County - Solid Waste Transfer Facility - Phase 1

Proposal Name: Weber County - Solid Waste Transfer Facility - Phase 1
Proposal Value: \$655,769.35

Sect.	Item	Modifier.	UOM	Description	Line Total
Labor	Equip.	Material	(Excluded if marked with an X)		

31 - Earthwork

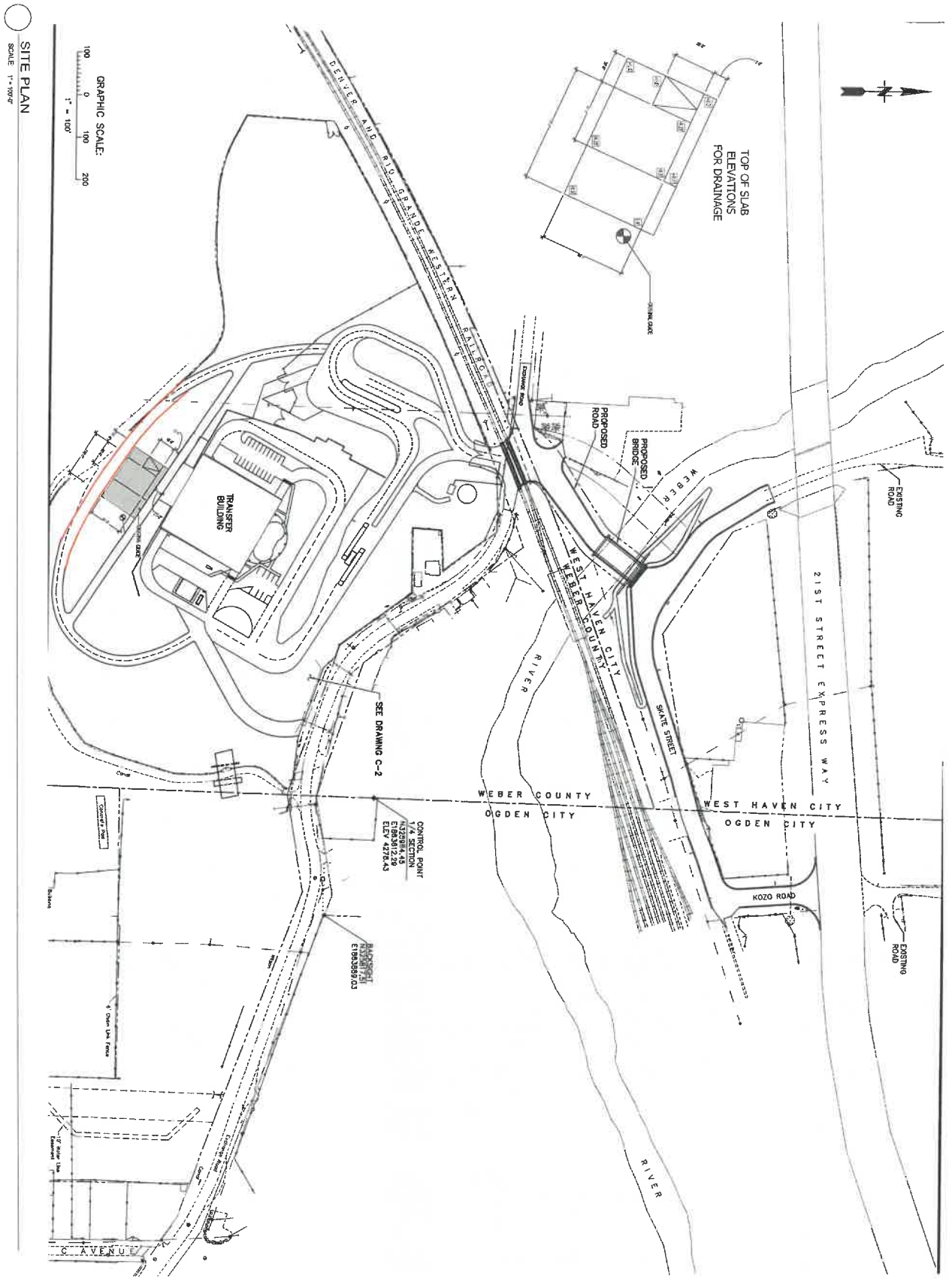
22	31	23	16	33	0018		SY	Compaction of Fill or Subbase for Bulk Excavation by MachinePer Lift											\$5,676.00
								Installation	Quantity		Unit Price		Factor		Total				
									11,000.00	x	0.40	x	1.2900	=	5,676.00				

Subtotal for 31 - Earthwork **\$141,648.45**

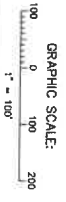
Proposal Total **\$655,769.35**

This total represents the correct total for the proposal. Any discrepancy between line totals, sub-totals and the proposal total is due to rounding.

Exhibit B



SITE PLAN
SCALE 1" = 100'



S100

SHEET NAME
SITE PLAN

ISSUE DATE: 3/17/2023
ISSUE TYPE: REVISION SET
PROJECT NUMBER: 23017

DRAWN BY: TT
DESIGNED BY: RLM
CHECKED BY: ROM

PROJECT INFO
**WEBER TRANSFER STATION
NEW CD PLATFORM**

800 WEST EXCHANGE ROAD,
OGDEN UTAH 84401

OWNER
**WEBER COUNTY
PROPERTY
MANAGEMENT
DEPARTMENT**

2880 W 4700 S SUITE A
WEST HAVEN, UT 84129
www.webercd.com

OVER ALL GENERAL COMPLIANCE

1. DESIGN SHALL BE IN ACCORDANCE WITH THE FOLLOWING:
 - a. UTAH STATE BUILDING CODE
 - b. UTAH STATE ELECTRICAL CODE
 - c. UTAH STATE PLUMBING CODE
 - d. UTAH STATE MECHANICAL CODE
 - e. UTAH STATE FIRE CODE
 - f. UTAH STATE ENVIRONMENTAL CODE
 - g. UTAH STATE HEALTH CARE FACILITY DESIGN AND CONSTRUCTION CODE
 - h. UTAH STATE HEALTH CARE FACILITY OPERATING AND MAINTENANCE CODE
 - i. UTAH STATE HEALTH CARE FACILITY SAFETY AND SECURITY CODE
 - j. UTAH STATE HEALTH CARE FACILITY ACCESSIBILITY CODE
 - k. UTAH STATE HEALTH CARE FACILITY INFECTION CONTROL CODE
 - l. UTAH STATE HEALTH CARE FACILITY LABORATORY CODE
 - m. UTAH STATE HEALTH CARE FACILITY MEDICAL OFFICE CODE
 - n. UTAH STATE HEALTH CARE FACILITY OPERATING AND MAINTENANCE CODE
 - o. UTAH STATE HEALTH CARE FACILITY SAFETY AND SECURITY CODE
 - p. UTAH STATE HEALTH CARE FACILITY ACCESSIBILITY CODE
 - q. UTAH STATE HEALTH CARE FACILITY INFECTION CONTROL CODE
 - r. UTAH STATE HEALTH CARE FACILITY LABORATORY CODE
 - s. UTAH STATE HEALTH CARE FACILITY MEDICAL OFFICE CODE
2. DESIGN SHALL BE IN ACCORDANCE WITH THE FOLLOWING:
 - a. UTAH STATE BUILDING CODE
 - b. UTAH STATE ELECTRICAL CODE
 - c. UTAH STATE PLUMBING CODE
 - d. UTAH STATE MECHANICAL CODE
 - e. UTAH STATE FIRE CODE
 - f. UTAH STATE ENVIRONMENTAL CODE
 - g. UTAH STATE HEALTH CARE FACILITY DESIGN AND CONSTRUCTION CODE
 - h. UTAH STATE HEALTH CARE FACILITY OPERATING AND MAINTENANCE CODE
 - i. UTAH STATE HEALTH CARE FACILITY SAFETY AND SECURITY CODE
 - j. UTAH STATE HEALTH CARE FACILITY ACCESSIBILITY CODE
 - k. UTAH STATE HEALTH CARE FACILITY INFECTION CONTROL CODE
 - l. UTAH STATE HEALTH CARE FACILITY LABORATORY CODE
 - m. UTAH STATE HEALTH CARE FACILITY MEDICAL OFFICE CODE
 - n. UTAH STATE HEALTH CARE FACILITY OPERATING AND MAINTENANCE CODE
 - o. UTAH STATE HEALTH CARE FACILITY SAFETY AND SECURITY CODE
 - p. UTAH STATE HEALTH CARE FACILITY ACCESSIBILITY CODE
 - q. UTAH STATE HEALTH CARE FACILITY INFECTION CONTROL CODE
 - r. UTAH STATE HEALTH CARE FACILITY LABORATORY CODE
 - s. UTAH STATE HEALTH CARE FACILITY MEDICAL OFFICE CODE

DESIGN CRITERIA

1. DESIGN SHALL BE IN ACCORDANCE WITH THE FOLLOWING:
 - a. UTAH STATE BUILDING CODE
 - b. UTAH STATE ELECTRICAL CODE
 - c. UTAH STATE PLUMBING CODE
 - d. UTAH STATE MECHANICAL CODE
 - e. UTAH STATE FIRE CODE
 - f. UTAH STATE ENVIRONMENTAL CODE
 - g. UTAH STATE HEALTH CARE FACILITY DESIGN AND CONSTRUCTION CODE
 - h. UTAH STATE HEALTH CARE FACILITY OPERATING AND MAINTENANCE CODE
 - i. UTAH STATE HEALTH CARE FACILITY SAFETY AND SECURITY CODE
 - j. UTAH STATE HEALTH CARE FACILITY ACCESSIBILITY CODE
 - k. UTAH STATE HEALTH CARE FACILITY INFECTION CONTROL CODE
 - l. UTAH STATE HEALTH CARE FACILITY LABORATORY CODE
 - m. UTAH STATE HEALTH CARE FACILITY MEDICAL OFFICE CODE
 - n. UTAH STATE HEALTH CARE FACILITY OPERATING AND MAINTENANCE CODE
 - o. UTAH STATE HEALTH CARE FACILITY SAFETY AND SECURITY CODE
 - p. UTAH STATE HEALTH CARE FACILITY ACCESSIBILITY CODE
 - q. UTAH STATE HEALTH CARE FACILITY INFECTION CONTROL CODE
 - r. UTAH STATE HEALTH CARE FACILITY LABORATORY CODE
 - s. UTAH STATE HEALTH CARE FACILITY MEDICAL OFFICE CODE
2. DESIGN SHALL BE IN ACCORDANCE WITH THE FOLLOWING:
 - a. UTAH STATE BUILDING CODE
 - b. UTAH STATE ELECTRICAL CODE
 - c. UTAH STATE PLUMBING CODE
 - d. UTAH STATE MECHANICAL CODE
 - e. UTAH STATE FIRE CODE
 - f. UTAH STATE ENVIRONMENTAL CODE
 - g. UTAH STATE HEALTH CARE FACILITY DESIGN AND CONSTRUCTION CODE
 - h. UTAH STATE HEALTH CARE FACILITY OPERATING AND MAINTENANCE CODE
 - i. UTAH STATE HEALTH CARE FACILITY SAFETY AND SECURITY CODE
 - j. UTAH STATE HEALTH CARE FACILITY ACCESSIBILITY CODE
 - k. UTAH STATE HEALTH CARE FACILITY INFECTION CONTROL CODE
 - l. UTAH STATE HEALTH CARE FACILITY LABORATORY CODE
 - m. UTAH STATE HEALTH CARE FACILITY MEDICAL OFFICE CODE
 - n. UTAH STATE HEALTH CARE FACILITY OPERATING AND MAINTENANCE CODE
 - o. UTAH STATE HEALTH CARE FACILITY SAFETY AND SECURITY CODE
 - p. UTAH STATE HEALTH CARE FACILITY ACCESSIBILITY CODE
 - q. UTAH STATE HEALTH CARE FACILITY INFECTION CONTROL CODE
 - r. UTAH STATE HEALTH CARE FACILITY LABORATORY CODE
 - s. UTAH STATE HEALTH CARE FACILITY MEDICAL OFFICE CODE

CONCRETE MIXTURE TABLE

Concrete Class	Compressive Strength (psi)	Water-Cement Ratio	Slump (inches)	Approximate Unit Weight (pcf)
2000	2000	0.50	4-6	140
2500	2500	0.45	6-8	145
3000	3000	0.40	8-10	150
3500	3500	0.35	10-12	155
4000	4000	0.30	12-14	160
4500	4500	0.25	14-16	165
5000	5000	0.20	16-18	170
5500	5500	0.15	18-20	175
6000	6000	0.10	20-22	180

REBAR LAP SPICE LENGTH TABLE

Rebar Size	Development Length (l _d)	Lap Length (l _l)
#3	12d	18d
#4	16d	24d
#5	20d	30d
#6	24d	36d
#7	28d	42d
#8	32d	48d
#9	36d	54d
#10	40d	60d
#11	44d	66d
#12	48d	72d

HOODED AND BENT TABLE

Condition	Concrete Class	Rebar Size	Development Length (l _d)	Lap Length (l _l)
Hooped	2000	#3	12d	18d
		#4	16d	24d
Bent	2000	#3	12d	18d
		#4	16d	24d

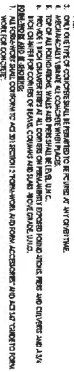
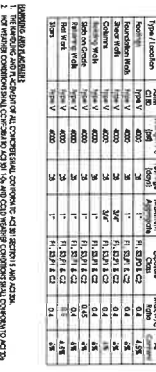


REINFORCEMENT

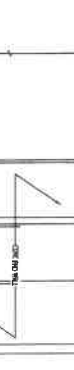
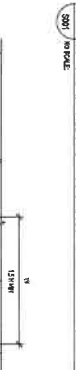
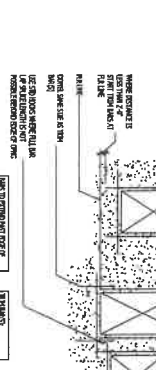
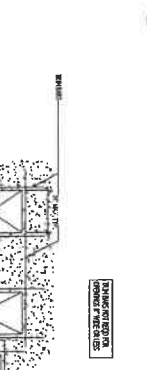
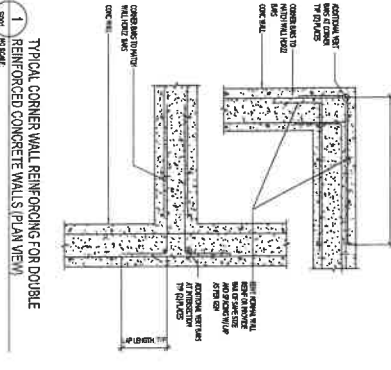
1. REINFORCEMENT SHALL BE IN ACCORDANCE WITH THE FOLLOWING:
 - a. UTAH STATE BUILDING CODE
 - b. UTAH STATE ELECTRICAL CODE
 - c. UTAH STATE PLUMBING CODE
 - d. UTAH STATE MECHANICAL CODE
 - e. UTAH STATE FIRE CODE
 - f. UTAH STATE ENVIRONMENTAL CODE
 - g. UTAH STATE HEALTH CARE FACILITY DESIGN AND CONSTRUCTION CODE
 - h. UTAH STATE HEALTH CARE FACILITY OPERATING AND MAINTENANCE CODE
 - i. UTAH STATE HEALTH CARE FACILITY SAFETY AND SECURITY CODE
 - j. UTAH STATE HEALTH CARE FACILITY ACCESSIBILITY CODE
 - k. UTAH STATE HEALTH CARE FACILITY INFECTION CONTROL CODE
 - l. UTAH STATE HEALTH CARE FACILITY LABORATORY CODE
 - m. UTAH STATE HEALTH CARE FACILITY MEDICAL OFFICE CODE
 - n. UTAH STATE HEALTH CARE FACILITY OPERATING AND MAINTENANCE CODE
 - o. UTAH STATE HEALTH CARE FACILITY SAFETY AND SECURITY CODE
 - p. UTAH STATE HEALTH CARE FACILITY ACCESSIBILITY CODE
 - q. UTAH STATE HEALTH CARE FACILITY INFECTION CONTROL CODE
 - r. UTAH STATE HEALTH CARE FACILITY LABORATORY CODE
 - s. UTAH STATE HEALTH CARE FACILITY MEDICAL OFFICE CODE
2. REINFORCEMENT SHALL BE IN ACCORDANCE WITH THE FOLLOWING:
 - a. UTAH STATE BUILDING CODE
 - b. UTAH STATE ELECTRICAL CODE
 - c. UTAH STATE PLUMBING CODE
 - d. UTAH STATE MECHANICAL CODE
 - e. UTAH STATE FIRE CODE
 - f. UTAH STATE ENVIRONMENTAL CODE
 - g. UTAH STATE HEALTH CARE FACILITY DESIGN AND CONSTRUCTION CODE
 - h. UTAH STATE HEALTH CARE FACILITY OPERATING AND MAINTENANCE CODE
 - i. UTAH STATE HEALTH CARE FACILITY SAFETY AND SECURITY CODE
 - j. UTAH STATE HEALTH CARE FACILITY ACCESSIBILITY CODE
 - k. UTAH STATE HEALTH CARE FACILITY INFECTION CONTROL CODE
 - l. UTAH STATE HEALTH CARE FACILITY LABORATORY CODE
 - m. UTAH STATE HEALTH CARE FACILITY MEDICAL OFFICE CODE
 - n. UTAH STATE HEALTH CARE FACILITY OPERATING AND MAINTENANCE CODE
 - o. UTAH STATE HEALTH CARE FACILITY SAFETY AND SECURITY CODE
 - p. UTAH STATE HEALTH CARE FACILITY ACCESSIBILITY CODE
 - q. UTAH STATE HEALTH CARE FACILITY INFECTION CONTROL CODE
 - r. UTAH STATE HEALTH CARE FACILITY LABORATORY CODE
 - s. UTAH STATE HEALTH CARE FACILITY MEDICAL OFFICE CODE

CONCRETE MIXTURE TABLE

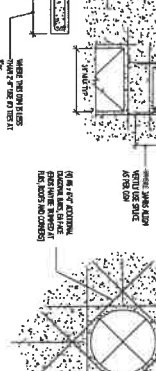
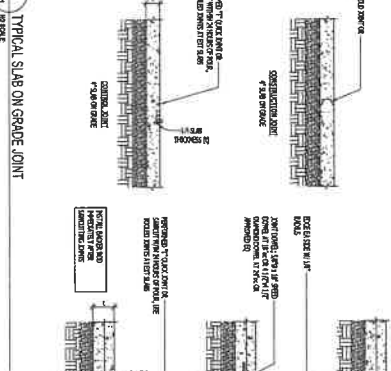
Concrete Class	Compressive Strength (psi)	Water-Cement Ratio	Slump (inches)	Approximate Unit Weight (pcf)
2000	2000	0.50	4-6	140
2500	2500	0.45	6-8	145
3000	3000	0.40	8-10	150
3500	3500	0.35	10-12	155
4000	4000	0.30	12-14	160
4500	4500	0.25	14-16	165
5000	5000	0.20	16-18	170
5500	5500	0.15	18-20	175
6000	6000	0.10	20-22	180



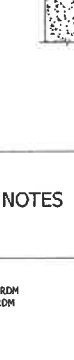
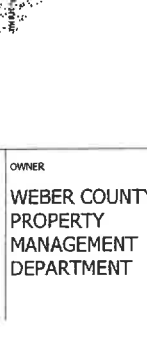
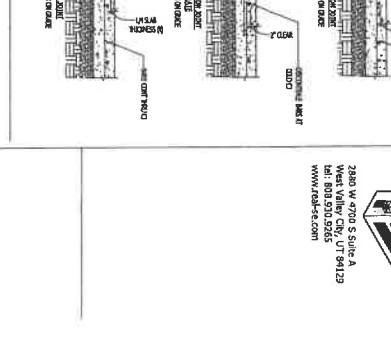
TYPICAL CORNER WALL REINFORCING FOR DOUBLE



TYPICAL SLAB ON GRADE JOINT



TYPICAL TRIM BARS AROUND MISCELLANEOUS



TYPICAL FOOTING STEP AT CONCRETE FOUNDATION



TYPICAL PIPE PERPENDICULAR TO FOOTING

GENERAL STRUCTURAL NOTES

1. ALL REINFORCEMENT SHALL BE IN ACCORDANCE WITH THE FOLLOWING:

- a. UTAH STATE BUILDING CODE
- b. UTAH STATE ELECTRICAL CODE
- c. UTAH STATE PLUMBING CODE
- d. UTAH STATE MECHANICAL CODE
- e. UTAH STATE FIRE CODE
- f. UTAH STATE ENVIRONMENTAL CODE
- g. UTAH STATE HEALTH CARE FACILITY DESIGN AND CONSTRUCTION CODE
- h. UTAH STATE HEALTH CARE FACILITY OPERATING AND MAINTENANCE CODE
- i. UTAH STATE HEALTH CARE FACILITY SAFETY AND SECURITY CODE
- j. UTAH STATE HEALTH CARE FACILITY ACCESSIBILITY CODE
- k. UTAH STATE HEALTH CARE FACILITY INFECTION CONTROL CODE
- l. UTAH STATE HEALTH CARE FACILITY LABORATORY CODE
- m. UTAH STATE HEALTH CARE FACILITY MEDICAL OFFICE CODE
- n. UTAH STATE HEALTH CARE FACILITY OPERATING AND MAINTENANCE CODE
- o. UTAH STATE HEALTH CARE FACILITY SAFETY AND SECURITY CODE
- p. UTAH STATE HEALTH CARE FACILITY ACCESSIBILITY CODE
- q. UTAH STATE HEALTH CARE FACILITY INFECTION CONTROL CODE
- r. UTAH STATE HEALTH CARE FACILITY LABORATORY CODE
- s. UTAH STATE HEALTH CARE FACILITY MEDICAL OFFICE CODE

2. ALL REINFORCEMENT SHALL BE IN ACCORDANCE WITH THE FOLLOWING:

- a. UTAH STATE BUILDING CODE
- b. UTAH STATE ELECTRICAL CODE
- c. UTAH STATE PLUMBING CODE
- d. UTAH STATE MECHANICAL CODE
- e. UTAH STATE FIRE CODE
- f. UTAH STATE ENVIRONMENTAL CODE
- g. UTAH STATE HEALTH CARE FACILITY DESIGN AND CONSTRUCTION CODE
- h. UTAH STATE HEALTH CARE FACILITY OPERATING AND MAINTENANCE CODE
- i. UTAH STATE HEALTH CARE FACILITY SAFETY AND SECURITY CODE
- j. UTAH STATE HEALTH CARE FACILITY ACCESSIBILITY CODE
- k. UTAH STATE HEALTH CARE FACILITY INFECTION CONTROL CODE
- l. UTAH STATE HEALTH CARE FACILITY LABORATORY CODE
- m. UTAH STATE HEALTH CARE FACILITY MEDICAL OFFICE CODE
- n. UTAH STATE HEALTH CARE FACILITY OPERATING AND MAINTENANCE CODE
- o. UTAH STATE HEALTH CARE FACILITY SAFETY AND SECURITY CODE
- p. UTAH STATE HEALTH CARE FACILITY ACCESSIBILITY CODE
- q. UTAH STATE HEALTH CARE FACILITY INFECTION CONTROL CODE
- r. UTAH STATE HEALTH CARE FACILITY LABORATORY CODE
- s. UTAH STATE HEALTH CARE FACILITY MEDICAL OFFICE CODE

PROJECT INFO

WEBER TRANSFER STATION
NEW CD PLATFORM

800 WEST EXCHANGE ROAD,
OGDEN UTAH 84401

SHEET NAME

GENERAL STRUCTURAL NOTES

ISSUE DATE: 3/2/2023
ISSUE TYPE: REVIEW SET
PROJECT NUMBER: 23017

OWNER

WEBER COUNTY
PROPERTY
MANAGEMENT
DEPARTMENT

2880 W. 970 S. SUITE A
MIDWINTER, UT 84413
WWW.FCH-UT.COM

SHEET NUMBER: S001



2880 W. 4700 S. Suite A
 Maple Valley, UT 84129
 www.rsd-cc.com

FOOTING AND FOUNDATION PLAN NOTES

- SEE TYPICAL FOUNDATION DETAIL FOR INFORMATION ON FOUNDATION MATERIALS AND CONSTRUCTION METHODS.
- FOUNDATION SHALL BE CONSTRUCTED TO SUPPORT ALL LOADS AND SHALL BE PROTECTED FROM ALL ADJACENT EXISTING AND PROPOSED UTILITIES.
- FOUNDATION SHALL BE CONSTRUCTED TO SUPPORT ALL LOADS AND SHALL BE PROTECTED FROM ALL ADJACENT EXISTING AND PROPOSED UTILITIES.
- FOUNDATION SHALL BE CONSTRUCTED TO SUPPORT ALL LOADS AND SHALL BE PROTECTED FROM ALL ADJACENT EXISTING AND PROPOSED UTILITIES.
- FOUNDATION SHALL BE CONSTRUCTED TO SUPPORT ALL LOADS AND SHALL BE PROTECTED FROM ALL ADJACENT EXISTING AND PROPOSED UTILITIES.
- FOUNDATION SHALL BE CONSTRUCTED TO SUPPORT ALL LOADS AND SHALL BE PROTECTED FROM ALL ADJACENT EXISTING AND PROPOSED UTILITIES.
- FOUNDATION SHALL BE CONSTRUCTED TO SUPPORT ALL LOADS AND SHALL BE PROTECTED FROM ALL ADJACENT EXISTING AND PROPOSED UTILITIES.
- FOUNDATION SHALL BE CONSTRUCTED TO SUPPORT ALL LOADS AND SHALL BE PROTECTED FROM ALL ADJACENT EXISTING AND PROPOSED UTILITIES.
- FOUNDATION SHALL BE CONSTRUCTED TO SUPPORT ALL LOADS AND SHALL BE PROTECTED FROM ALL ADJACENT EXISTING AND PROPOSED UTILITIES.
- FOUNDATION SHALL BE CONSTRUCTED TO SUPPORT ALL LOADS AND SHALL BE PROTECTED FROM ALL ADJACENT EXISTING AND PROPOSED UTILITIES.

MARKS AND SYMBOL LEGEND

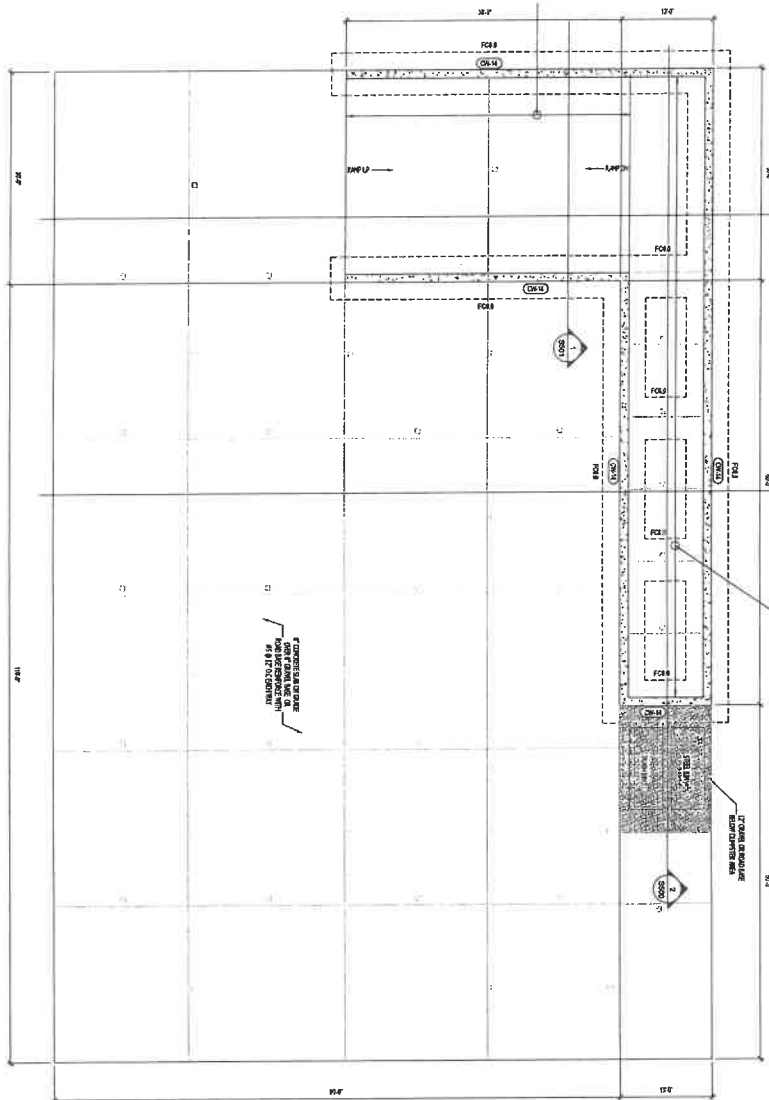
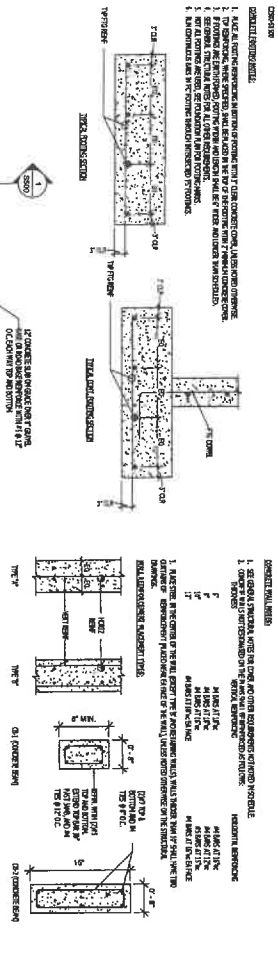
	SECTION MARK
	DITCH WALL SECTION
	FOOTING SECTION
	FOUNDATION SECTION
	FOUNDATION SECTION
	FOUNDATION SECTION
	FOUNDATION SECTION
	FOUNDATION SECTION
	FOUNDATION SECTION
	FOUNDATION SECTION
	FOUNDATION SECTION

CONCRETE WALL

WALL	THICKNESS	VERTICAL REINFORCEMENT	HORIZONTAL REINFORCEMENT	WALL TYPE	COMMENTS
01A	12"	Ø12 @ 12" VC	Ø12 @ 12" HC	1	

CONCRETE FOOTING SCHEDULE

WALL	VERTICAL REINFORCEMENT	HORIZONTAL REINFORCEMENT	COMMENTS
01A	Ø12 @ 12" VC	Ø12 @ 12" HC	



1 FOOTING AND FOUNDATION PLAN
 SCALE: 1/8" = 1'-0"

SHEET NAME
FOOTING AND FOUNDATION PLAN

ISSUE DATE: 1/7/2023
 ISSUE TYPE: REVIEW SET
 PROJECT NUMBER: 23017

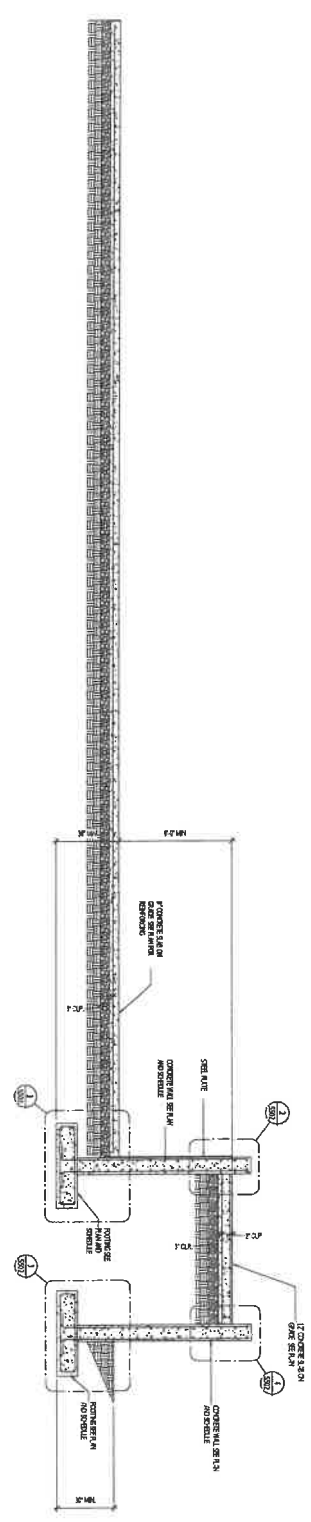
DRAWN BY: TT
 DESIGNED BY: RDM
 CHECKED BY: RDM

PROJECT INFO
**WEBER TRANSFER STATION
 NEW CD PLATFORM**

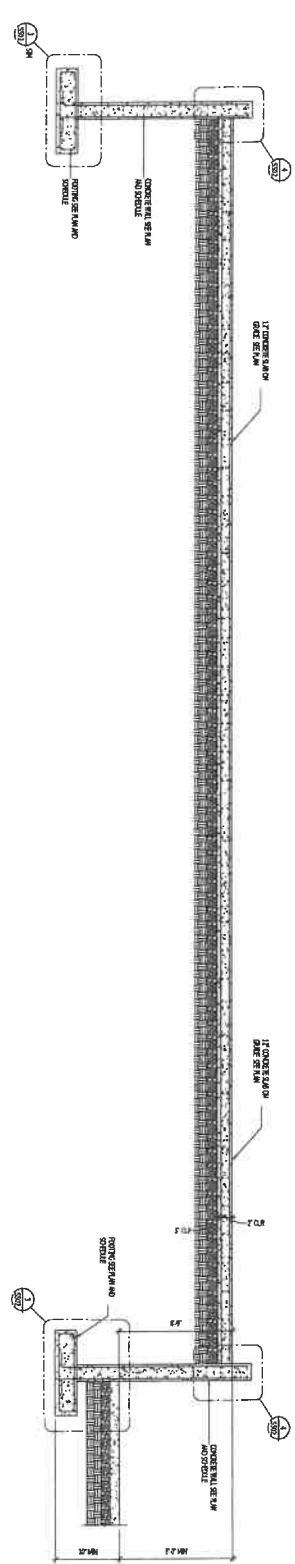
800 WEST EXCHANGE ROAD,
 OGDEN UTAH 84401

OWNER
**WEBER COUNTY
 PROPERTY
 MANAGEMENT
 DEPARTMENT**

S101



1 FOUNDATION DETAIL
3/20 SCALE



2 FOUNDATION DETAIL
3/20 SCALE

S500

SHEET NAME
STRUCTURAL SECTIONS

ISSUE DATE: 11/2/23
ISSUE TYPE: REVIEW SET
PROJECT NUMBER: 23017

DRAWN BY: RR
DESIGNED BY: RDM
CHECKED BY: RDM

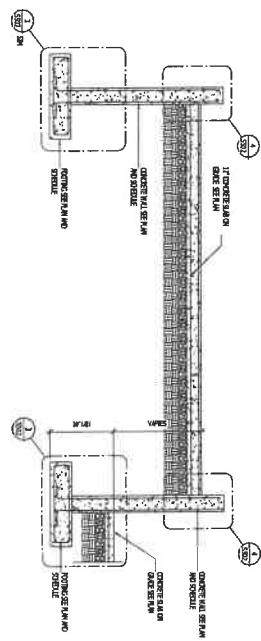
PROJECT INFO
**WEBER TRANSFER STATION
NEW CD PLATFORM**

800 WEST EXCHANGE ROAD,
OGDEN UTAH 84401

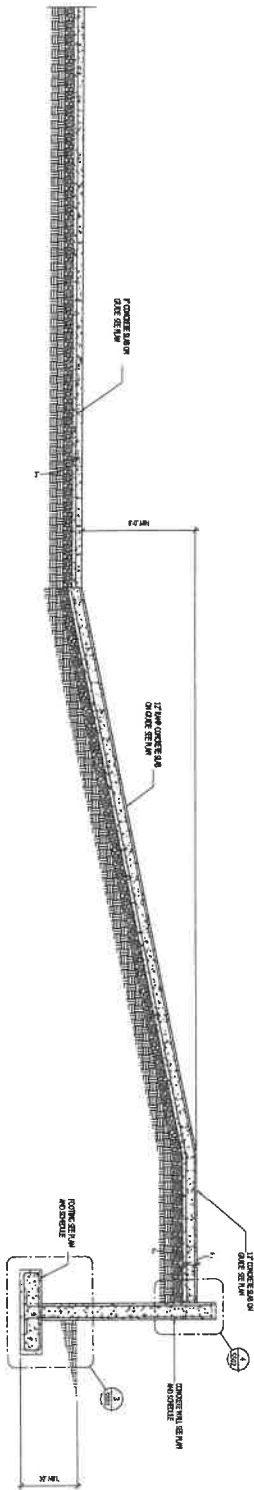
OWNER
**WEBER COUNTY
PROPERTY
MANAGEMENT
DEPARTMENT**

2880 W. 9700 S. Suite A
Ogden, UT 84403
Tel: 808.850.0265
www.rdh-us.com





1 RAMP AT FOUNDATION
 2023
 RDM



2 RAMP DETAIL
 2023
 RDM



2880 W-4200 S Suite A
 West Valley City, UT 84129
 Tel: 800.526.9255
 www.rdm-inc.com

OWNER
**WEBER COUNTY
 PROPERTY
 MANAGEMENT
 DEPARTMENT**

PROJECT INFO
**WEBER TRANSFER STATION
 NEW CD PLATFORM**

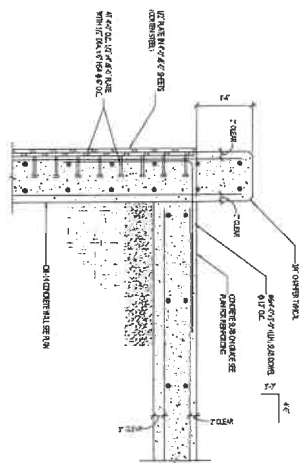
800 WEST EXCHANGE ROAD,
 OGDEN UTAH 84401

SHEET NAME
STRUCTURAL SECTIONS

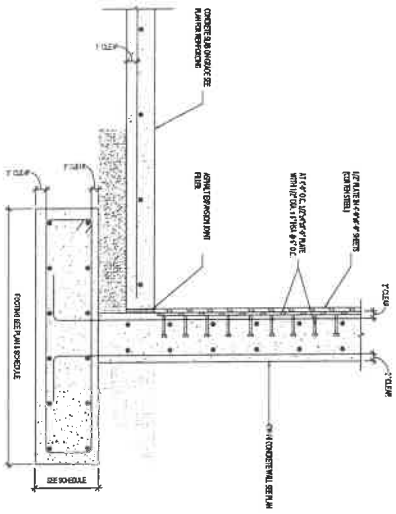
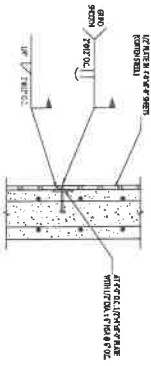
ISSUE DATE: 1/11/2023
 ISSUE TYPE: REVIEW SET
 PROJECT NUMBER: 23617

DRAWN BY: TT
 DESIGNED BY: RDM
 CHECKED BY: RDM

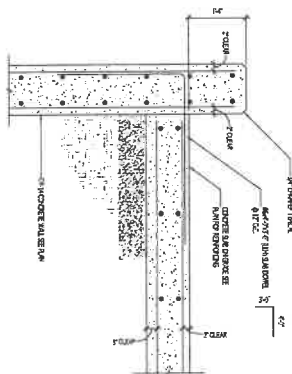
SHEET NUMBER:
S501



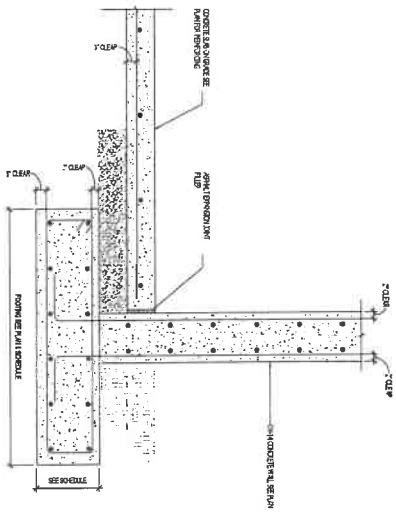
2 FOUNDATION DETAIL
5502 / REVISED



1 FOUNDATION DETAIL
5502 / REVISED



4 FOUNDATION DETAIL
5502 / REVISED



3 FOUNDATION DETAIL
5502 / REVISED



OWNER
**WEBER COUNTY
PROPERTY
MANAGEMENT
DEPARTMENT**

PROJECT INFO
**WEBER TRANSFER STATION
NEW CD PLATFORM**

800 WEST EXCHANGE ROAD,
OGDEN UTAH 84401

SHEET NAME
STRUCTURAL SECTIONS

ISSUE DATE: 3/3/2023
ISSUE TYPE: REVIEW SET
PROJECT NUMBER: 23017

DRAWN BY: TT
DESIGNED BY: RDM
CHECKED BY: RDM

S502